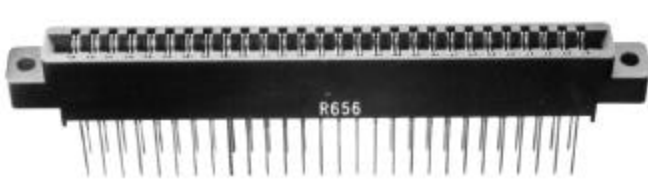
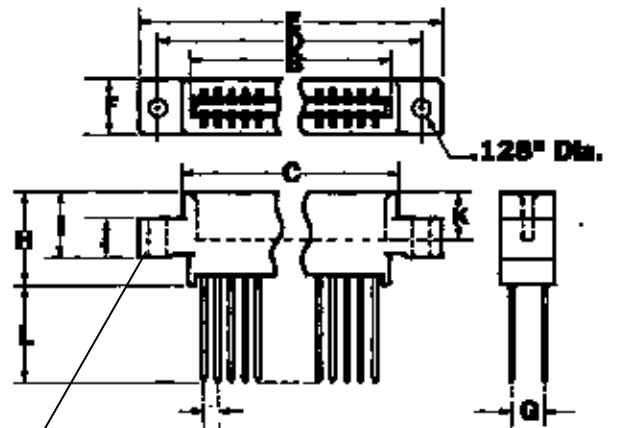


This section contains parts and accessories for Vectorbord products. They are useful for board-level prototyping and breadboarding. Prototypes are created in various ways; by computer design or by hand - but with one thing in common: sooner or later, you have to make a physical board. It is at this stage that Vectorbord and these parts and accessories may be useful to you. They are selected for convenience and utility and they are readily available from local Vector distributors.

Style 1



- Wire-Wrap .025" Sq. R656-3 56 Contacts
- Allows 3 level wraps
- Use 28 to 32 AWG wire
- STD bus



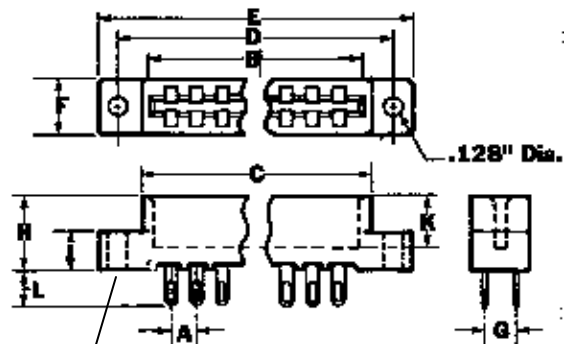
(Dimension table next page)

Centermount

Style 2



- Solder tail (with eyelet) R656-1 Solder
- Solder eyelet type
- R644C - Center Mounting Ears
- R644F - Flush Mounting (as shown in illustration)



(Dimension table next page)

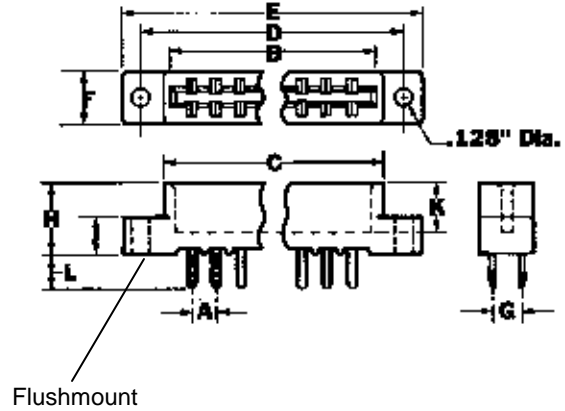
Flushmount

Accessories

Style 3



- Solder tail leads for mother boards & backplanes with special .140" row spacing
- R656-2: for backplane applications



Specifications

- Solder Type Insulator Material:** Phenolic, UL-94V-0 or glass filled Diallylphthalate UL-94V-1 or Ryton R10 or equivalent
- Wire-Wrap Type Insulator:** Phenolic, UL-94V-0 or glass filled Diallylphthalate UL-94V-1 or Polyester (VALOX) or equivalent UL-94V-0.
- Contact Material:** Phosphor bronze QQ-B-750
- Contact Plating:** .000010" gold over .000050" nickel
- Test Voltage:** 650 VAC
- Rated Current:** 3 AMPS
- Contact Res. Drop:** 30 mV Max. @ rated current
- Insulation Resistance:** 5000 ohms nominal @ 500 VDC

Ordering Information

| Part No. | No. of Contacts | Termination Type | Mounting Ears | Style # | A | B | C | D | E | F | G | H | I | J | K | L |
|----------|-----------------|------------------|---------------|---------|-------|--------|-------|--------|--------|------|-------|--------|------|------|-------|------|
| R630 | 30 | Solder Tail | Center | 2 | .156" | 2.504" | 2.65" | 2.938" | 3.270" | .41" | .200" | .47" | n/a | .25" | .34" | .25" |
| R636-1 | 72 | Wire-Wrap | Center | 1 | .100" | 3.707" | 3.88" | 4.175" | 4.475" | .41" | .200" | .62" | .55" | .25" | .34" | .65" |
| R636-2 | 72 | Solder Tail | Flush | 2 | .100" | 3.707" | 3.88" | 4.175" | 4.475" | .41" | .200" | .47" | n/a | .25" | .34" | .25" |
| R644 | 44 | Solder Tail | Flush | 2 | .156" | 3.596" | 3.75" | 4.032" | 4.360" | .41" | .200" | .47" | .25" | .25" | .265" | .25" |
| R644-2 | 44 | Wire-Wrap | Center | 1 | .100" | 2.300" | 2.55" | 2.850" | 3.120" | .41" | .200" | .62" | .55" | .25" | .297" | .65" |
| R644-3C | 44 | Wire-Wrap | Center | 1 | .156" | 3.596" | 3.75" | 4.032" | 4.360" | .41" | .200" | .62" | .55" | .25" | .384" | .65" |
| R644-3F | 44 | Wire-Wrap | Flush | 1 | .156" | 3.596" | 3.75" | 4.032" | 4.360" | .41" | .200" | .62" | .55" | .25" | .384" | .65" |
| R656-1 | 56 | Solder Tail | Flush | 2 | .125" | 3.625" | 3.79" | 4.045" | 4.336" | .41" | .200" | .47" | n/a | .25" | .34" | .25" |
| R656-2 | 56 | Wire-Wrap | Center | 1 | .125" | 3.625" | 3.79" | 4.045" | 4.325" | .41" | .250" | .62" | .55" | .25" | .34" | .22" |
| R680-1 | 80 | Wire-Wrap | Center | 1 | .125" | 5.125" | 5.29" | 5.545" | 5.805" | .41" | .250" | .62" | .55" | .25" | .34" | .65" |
| R680-2 | 80 | Solder Tail | Center | 2 | .125" | 5.125" | 5.29" | 5.545" | 5.805" | .41" | .200" | .62" | .55" | .25" | .34" | .65" |
| R681-2 | 100 | Wire-Wrap | Center | 3 | .125" | 6.375" | 6.54" | 6.795" | 7.065" | .41" | .250" | 7.065" | .55" | .25" | .34" | .22" |
| R681-3 | 100 | Solder Tail | Center | 2 | .125" | 6.375" | 6.54" | 6.795" | 7.065" | .41" | .200" | .47" | n/a | .25" | .34" | .25" |
| R683 | 62 | Solder Tail | Flush | 3 | .100" | 2.06" | 2.06" | n/a | 2.06" | .41" | .200" | .61" | n/a | .25" | .295" | .20" |

Accessories